

Our PX panels, equipped with illuminated Indus shelves, provide an optimal horizontal solution for eyewear display. These metal structures feature glass shelves and embedded LED lighting, designed to accentuate the authentic hues of the eyewear, thereby enhancing the visibility of your collections. This plug-and-play solution is specifically tailored to meet your eyewear presentation needs.

These panels are available with black Indus shelves. Adding our mirror panel and/or storage cabinet offers an efficient solution to design a sophisticated sunglass corner.

#### SPECIFICATIONS:

Security: Non-locked  
Panel material: Steel  
Shelf: Glass shelf in steel casing  
glass mirror, oak wood cabinet

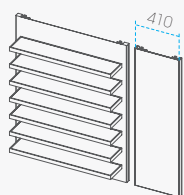
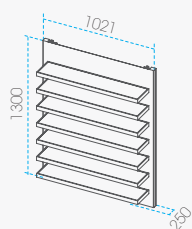
#### UNIQUE FEATURES:

Illuminated shelves from top & bottom  
Shows the true colours of the frames  
Accessible presentation  
Hardened glass with smooth surface

#### DIMENSIONS:

Advised panel height: 2100mm  
Highest presentation: 1915mm  
Lowest presentation: 955mm  
Vertical grid: 160mm

#### VARIATIONS:

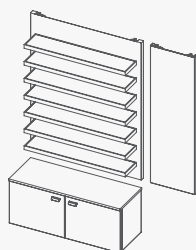
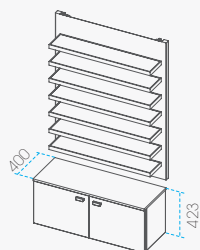


##### PI.O-S-

Security: Non-locked  
Capacity: 35 frames (5x7)  
Add ons: -  
Weight: 51kg

##### PI.O-S+

Security: Non-locked  
Capacity: 35 frames (5x7)  
Add ons: Mirror  
Weight: 65 kg



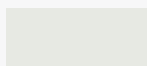
##### PI.O+S-

Security: Non-locked  
Capacity: 35 frames (5x7)  
Add ons: Storage  
Weight: 73 kg

##### PI.O+S+

Security: Non-locked  
Capacity: 35 frames (5x7)  
Add ons: Mirror & Storage  
Weight: 87 kg

#### COLOURS PANEL



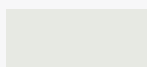
**White**  
Glossy  
RAL 9016

#### COLOURS INDUS SHELVES



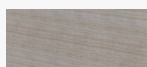
**Black**  
Fine texture  
RAL 9005

#### COLOURS STORAGE CABINET



**White**  
Glossy  
RAL 9016

+

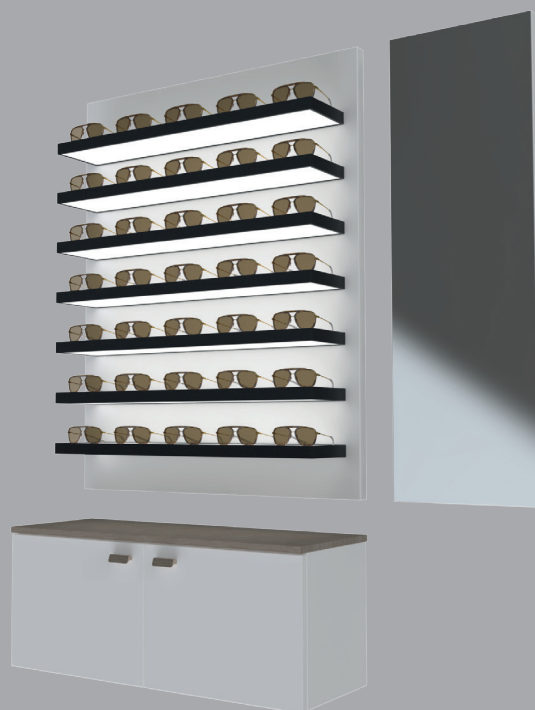
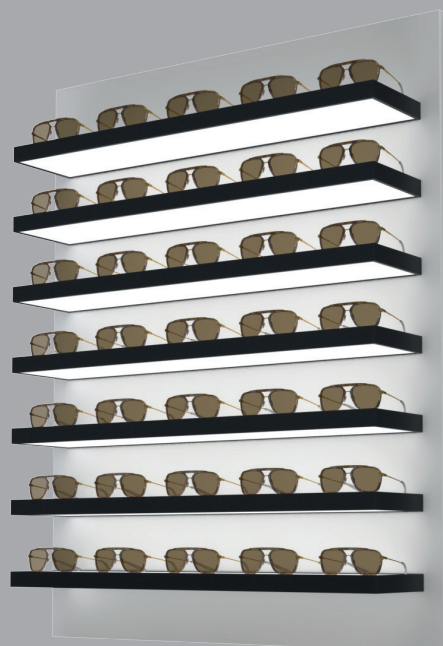


**Oak**  
Matt

# PX PANEL

## INDUS LED SHELVES

### NON-LOCKED



**TOP** | vision  
I N S T O R E

www.topvisioninstore.com  
sales@topvisiongroup.com  
+31 (0)23 517 66 77