

Mino eyewear columns feature an elegant and attractive industrial design and are available in a non-locked, key-locked and remote-controlled lockable version. The key-locked rods feature a slim designed locking mechanism with soft opening when turning the key.

SPECIFICATIONS:

Security: Key-locked
Material: Anodized aluminium

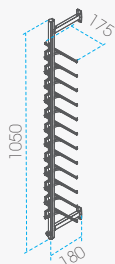
UNIQUE FEATURES:

Elegant design language
Refined integrated lock mechanism
Slim aluminium body

DIMENSIONS:

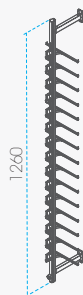
Advised floor height: 2020mm
Highest presentation: 1950mm
Lowest presentation: Varies
Vertical grid: 70mm
Horizontal grid: 190mm (advised)

VARIATIONS:



MKL 12-S

Capacity: 12 frames
Weight: 0,74 kg



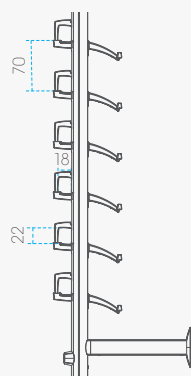
MKL 15-S

Capacity: 15 frames
Weight: 0,86 kg

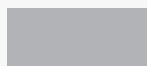


MKL 18-S

Capacity: 18 frames
Weight: 0,99 kg



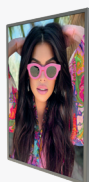
AVAILABLE COLOURS



Aluminium

Anodized
RAL 9006

AVAILABLE ACCESSORIES



50519 (Silver)

campaignholder A5



50527 (Silver)

Mirror A5



50525 (Silver)

Logoholder top



50513 (Silver)

Logoholder mid

MINO

WALL COLUMNS

KEY-LOCKED



TOP | vision
I N S T O R E

www.topvisiongroup.com
sales@topvisiongroup.com
+31 (0)23 517 66 77