

The Carré units with vertical lockable eyewear presentations (columns) for your high-end sunglasses, create a high-capacity presentation, illuminated with top panel light encased within the minimalistic Carré design concept. These rods are operated by a remote control with a personal code for swift and comfortable opening and closing.

#### SPECIFICATIONS:

Security: Remote controlled  
Material: Steel, coated at 180°C  
Light: Top panel light  
Light intensity: Varies per frame  
Colour temperature: 4000 Kelvin  
200 watt power supply included

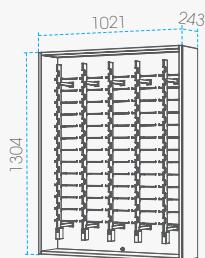
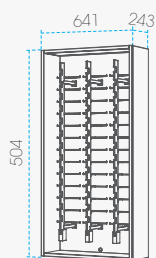
#### UNIQUE FEATURES:

Full steel construction (98%)  
Durable product  
Modular units  
Placed individual or connected  
Dutch design  
Uni body structure rods  
Interchangeable lock  
Lifecycle: 100.000+ openings

#### DIMENSIONS:

Advised floor height: 2100mm  
Highest presentation: 1947mm  
Lowest presentation: 1023mm  
Vertical grid: 77mm  
Horizontal grid: 190mm

#### VARIATIONS:



#### Carré CAR.13x3

Columns: 3  
Capacity: 39 frames  
Weight: 33 kg  
Wattage: 40 watt max.

#### Carré CAR.13x5

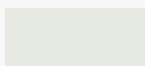
Columns: 5  
Capacity: 65 frames  
Weight: 41 kg  
Wattage: 60 watt max.

#### AVAILABLE COLOURS

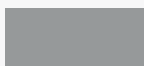
##### CHASSIS + SHELF COLOURS:



**Black**  
Fine structure  
RAL 9005



**Traffic white**  
Matt  
RAL 9016



**Window grey**  
Fine structure  
RAL 7040

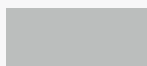


**Graphite grey**  
Fine structure  
RAL 7024

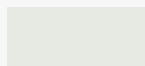


**Timeless rust**  
Fine structure

##### BACKGROUND COLOURS:



**Tele grey**  
Fine structure  
RAL 7047



**Traffic white**  
Matt  
RAL 9016



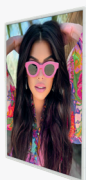
**Grey white**  
Fine structure  
RAL 9002



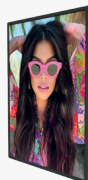
**Light grey/blue**  
Fine structure

\* Any colour combination is possible

#### AVAILABLE ACCESSORIES



**50692 (White)**  
campaignholder A5



**50692B (Black)**  
campaignholder A5



**50693 (White)**  
Mirror A5



**50693B (Black)**  
Mirror A5



**50691 (White)**  
Logoholder mid



**50691B (Black)**  
Logoholder mid



**50694 (White)**  
Logoholder top

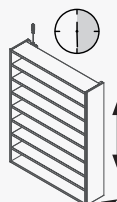
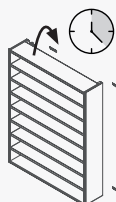
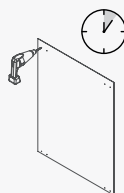
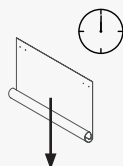


**50694B (Black)**  
Logoholder top



**50801**  
Extra remote control

#### EASY ASSEMBLY (+/- 30 minutes)



# CARRÉ

## LOCKABLE COLUMN UNITS

### REMOTE CONTROLLED



**TOP** | vision  
I N S T O R E

www.topvisiongroup.com  
sales@topvisiongroup.com  
+31 (0)23 517 66 77